



**NEW  
PRODUCT**



## PICK FOAM FLIGHT CASE ALPHATHETA OMNIS-DUO

U93026BL

We, at UDG have further fined-tuned already a great design concept of our flight case into one specially for the most discerning creative performers. Constructed from aluminum thus providing an extremely stable structure with lighter weight compared to traditional flight cases. The inner sides are protected with pick & pluck foam, which allowing user to create individualized adapted compartments. The pick & pluck foam allow you to pluck out any desired shape you require for AlphaTheta OMNIS-DUO and creating another slot beside for cable storage. This pick & pluck foam creating an easy, do-it-yourself customized system of case interiors.

The UDG Ultimate Pick Foam Flight Case AlphaTheta OMNIS-DUO is designed to keep your AlphaTheta OMNIS-DUO protected from accidental damage when you transport it to and from gigs. They're compact and lightweight yet tough enough to keep your gear safe.

### FEATURES

- Fits: AlphaTheta OMNIS-DUO
- Lighter weight than traditional flight cases
- Black Diamond finishing surface
- Corrosion resistant aluminium profiles with strong rounded corners
- Fully-lined with high density foam protective padding
- Ergonomic & sturdy carry handle
- Removable front access panel
- Fully lined interior egg-crate foam on lid
- Pick & pluck foam
- Two side strong butterfly lock and solid metal hinges
- Rubber feet at the bottom for support in standing position
- Several additional rivets for improved solidity

DIMENSION		WIDTH	HEIGHT	DEPTH	WEIGHT
OUTER	CM	56.0	49.0	21.0	5.50 kg 12.10 lbs
	INCH	22.0	19.3	8.3	
INNER	CM	55.0	48.0	20.0	
	INCH	21.6	18.9	7.9	

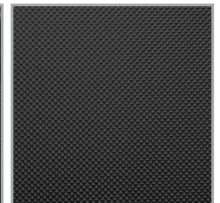
BLACK  
U93026BL



High grade aluminium UDG logo plate



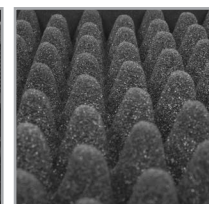
Corrosion resistant aluminium profiles with strong rounded corners



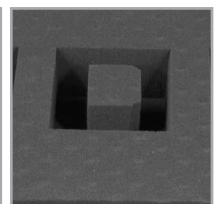
Black Diamond finishing surface



Removable access panel



Fully lined interior egg-crate foam on lid



Pick & pluck foam



Two side strong butterfly lock



Ergonomic & sturdy carry handle



Rubber feet at the bottom for support in standing position