



**NEW
PRODUCT**



BLACK
U91100BL

FLIGHT CASE SINGLE TURNTABLE BATTLE/ PLX-CRSS12 & 10"/12" MIXER BLACK PLUS (LAPTOP SHELF, TROLLEY & WHEELS)

U91100BL

UDG Ultimate Flightcases not only transport your complete set up easily & securely, but also facilitates devices to be setup within minutes. With these premium features incorporated, the UDG Ultimate Flightcases provides premium professional quality in a very stylish modern black colored combination.

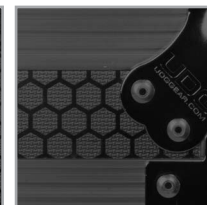
FEATURES

- Fits: 1 x PLX-CRSS12 / any turntable: Technics SL-1200MK7, Pioneer PLX-1000, Reloop RP-8000MK2, Denon DJ VL12 Prime, Stanton ST-150, Vestax PDX 3000, Numark TT, Audio Technica LP120-USB/ LP1240-USB, American Audio Power Drive 2.2, or any popular similar size turntables
- Fits: 1x any 10" & 12" mixer: Reloop Elite, Pioneer DJM-S9/ 909/ 707, Rane Seventy-Two, Sixty Two, Sixty One, MP-2014, TTM57 MK2, TTM57 SL, NI Kontrol Z2, Thud Ruble TRX, Mixars Quattro, Duo, or any popular similar size mixers
- Improved powder coated and anodized hardware
- High density diamond embossed EVA foam & carpeted protective padding
- Dual anchor rivets with included washer
- Convenient 80 mm space at rear for connections & PSU storage
- Removable front & rear access panel
- Built-in corner wheels with high quality in-line skate bearings for convenient transport
- Adjustable laptop shelf
- High quality retractable trolley handle
- Heavy duty construction of 9 mm thick plywood
- Laminated in a black finish with a honeycomb/hexagonal "Stage Grip" pattern
- Extra-wide solid aluminium profiles
- High grade aluminium UDG logo plate
- UDG heavy-duty spring-loaded handles
- Secure stacking due to stackable ball corners
- Recessed butterfly twist latch lock
- Includes adjustable foam pads to fit various mixers

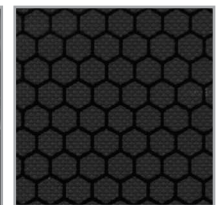
DIMENSION		WIDTH	HEIGHT	DEPTH
OUTER	CM	91.2	51.4	28.3
	INCH	35.9	20.2	11.1
INNER TURNTABLE COMPARTMENT	CM	37.7	45.4	8.3
	INCH	14.8	17.9	3.3
INNER MIXER COMPARTMENT	CM	40.9	47.4	8.3
	INCH	16.1	18.6	3.3
WEIGHT		18.0 kg	39.7 lbs	



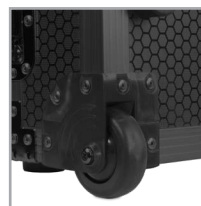
High grade aluminium UDG logo plate



Extra-wide solid aluminium profiles



Laminated in a black finish with a honeycomb/hexagonal "Stage Grip" pattern



Built-in corner wheels with high quality in-line skate bearings



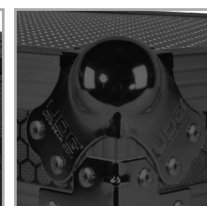
Adjustable laptop shelf



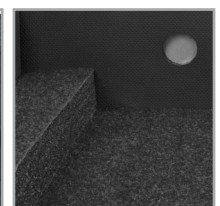
Removable front & rear access panel



High quality retractable trolley handle



Secure stacking due to stackable ball corners



High density diamond embossed EVA foam & carpeted protective padding