



**NEW**  
PRODUCT



BLACK  
U91079BL

## FLIGHT CASE WOLFMIX W1

U91079BL

UDG Ultimate Flightcases not only transport your Wolfmix W1 easily & securely, but also facilitates the Wolfmix W1 to be setup within minutes. With these premium features incorporated, the UDG Ultimate Flightcases provides premium professional quality in a very stylish modern black colored combination.

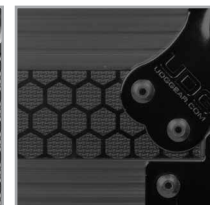
### FEATURES

- Fits: 1x Wolfmix W1
- Improved powder coated and anodized hardware
- High density diamond embossed EVA foam & carpeted protective padding
- Convenient 65 mm space at rear for connections & PSU storage
- Fully lined interior egg-crate foam on lid
- Heavy duty construction of 5 mm thick plywood
- Laminated in a black finish with a honeycomb/hexagonal "Stage Grip" pattern
- Extra-wide solid aluminum profiles
- High grade aluminium UDG logo plate
- Heavy-duty spring-loaded handles
- Secure stacking due to stackable ball corners
- Sturdy construction
- Recessed butterfly twist latch lock
- Rubber feet at the bottom for support in standing position

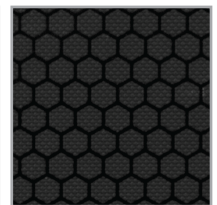
DIMENSION		WIDTH	HEIGHT	DEPTH
OUTER	CM	31.7	22.6	13.4
	INCH	12.5	8.9	5.3
INNER	CM	22.2	19.6	5.5
	INCH	8.7	7.7	2.2
WEIGHT		4.15 kg	9.15 lbs	



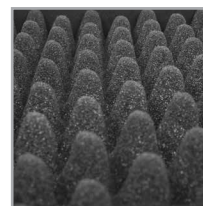
High grade aluminium UDG logo plate



Improved powder coated and anodized hardware



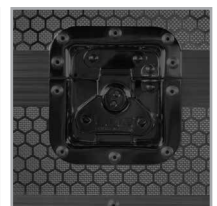
Laminated in a black finish with a honeycomb/hexagonal "Stage Grip" pattern



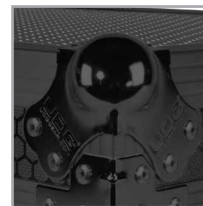
Fully lined interior egg-crate foam on lid



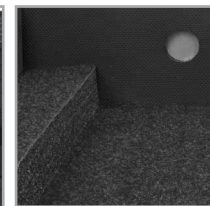
Heavy-duty spring-loaded handle



Recessed butterfly twist latch lock



Secure stacking due to stackable ball corners



High density diamond embossed EVA foam & carpeted protective padding



Rubber feet at the bottom for support in standing position